

**Pressure Gauges, Ring Syphon, U-Syphon and Cock**



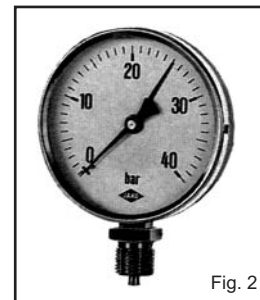
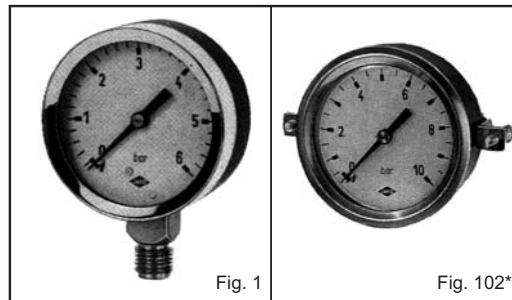
**Application :**

Robust heavy duty pressure gauges for general applications.

- For steam, air, water, oil etc.
- Direct mounting, 1/4", 3/8", 1/2 BSP.
- 2 1/2"(63mm), 4"(100mm). diameter dial.
- Dual graduations, bar and psi.
- Phosphor bronze Bourdon tube.
- Steel case, SS304 case, finished stone grey.

**Pressure ranges:**

- 0 - 2.5 bar (0 - 36 psi)
- 0 - 4 bar (0 - 58 psi)
- 0 - 6 bar (0 - 86 psi)
- 0 - 10 bar (0 - 145 psi)
- 0 - 16 bar (0 - 230 psi)
- 0 - 25 bar (0 - 350 psi)
- 0 - 40 bar (0 - 580 psi)



Case : Steel Galvanised, SS304  
 Bourdon Tube : Copper Alloy  
 Movement : Brass  
 Position : Bottom(Fig.1), Back (Fig.102)  
 Thread, BSP : 1/4"  
 Dial Diameter : 63 mm

Case : Steel Galvanised, SS304  
 Bourdon Tube : Copper Alloy  
 Movement : Brass  
 Position : Bottom  
 Thread, BSP : 3/8", 1/2"  
 Dial Diameter : 100 mm

\* Fig. 102 with narrow fronting and back clamp fixing  
 \* Filled : Dry (No filled)

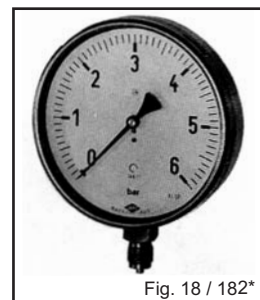
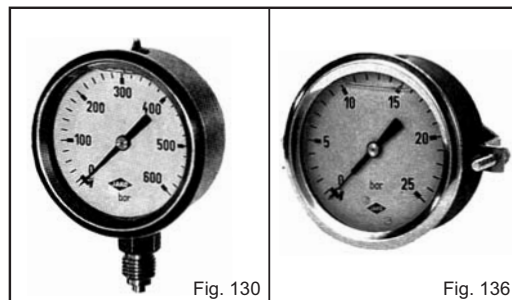
\* Filled : Dry (No filled)

**Gauge cock**  
 For isolating the pressure gauge.  
 Brass plug cock with ends screwed 3/8" BSP female.

65 mm.

501 S

**Ball Valve**  
 For isolating the pressure gauge.  
 Ball valve SS316 with ends screwed 1/4", 3/8", 1/2" BSP female.



Case : All Stainless Steel 304  
 Bourdon Tube : Stainless Steel 316  
 Movement : Stainless Steel 316  
 Position : Bottom, Back  
 Thread, BSP : 1/4", 1/2"  
 Dial Diameter : 63 mm and 100 mm

Case : All Stainless Steel 304  
 Bourdon Tube : Stainless Steel 316  
 Movement : Stainless Steel 316  
 Position : Bottom, Back  
 Thread, BSP : 1/4", 1/2"  
 Dial Diameter : 63 mm and 100 mm

\* Fig. 136 with narrow fronting and back clamp fixing  
 \* Filled : Glycerine Filled

\* Fig. 182 Position : Back and with narrow fronting and back clamp fixing  
 \* Filled : Glycerine Filled or Dry (No filled)

'U' syphon for side mounting  
 Ring syphon for top mounting

165, 160, 108, 273

**Syphon tubes**  
 Recommended for steam and condensate systems, to prevent oscillation of the gauge.  
 May also be used for other media.  
 Mild steel, screwed 3/8", 1/2" BSP complete with 2 locknuts.



**ERAWAN VALVES CO., LTD.**

43/9 Soi Sukhumvit 103, Sukhumvit Rd., Bangna, Bangkok 10260 Thailand

Tel: 02-747-5517 [AUTO], Fax: 02-747-5514, 02-399-4427

Website: [www.erawantech.co.th](http://www.erawantech.co.th) E-mail: [erawantech1@yahoo.com](mailto:erawantech1@yahoo.com)



Fig. 20  
 Dial Diameter : 100 mm.  
 Case : steel Galvanised  
 Wetted Part : Brass  
 Bulb : Brass/Steel  
 Accuracy : +/- 4%  
 Bulb length : 100 mm.  
 Connection : 1/2" BSP  
 Position : Back  
 Range : 0-120°C, 0-400°C

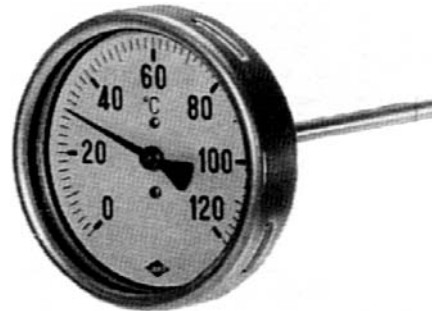


Fig. 226  
 Dial Diameter : 100 mm.  
 Case : All stainless steel  
 Accuracy : +/- 1.60%  
 Bulb length : 100, 150 mm.  
 Connection : G 1/2-BSP  
 Position : Back  
 Range : 0-120°C, 0-160°C, 0-200°C, 0-300°C, 0-400°C



Fig. 227  
 Dial Diameter : 100 mm.  
 Case : All stainless steel  
 Accuracy : +/- 1.60%  
 Bulb length : 100, 150 mm.  
 Connection : G 1/2-BSP  
 Position : Bottom  
 Range : 0-120°C, 0-160°C, 0-200°C, 0-300°C, 0-400°C



Pocket for thermometer



**ERAWAN VALVES CO.,LTD.**

43/9 Soi Sukhumvit 103, Sukhumvit Rd., Bangna, Bangkok 10260 Thailand

Tel: 02-747-5517 [AUTO], Fax: 02-747-5514, 02-399-4427

Website: [www.erawantech.co.th](http://www.erawantech.co.th) E-mail: [erawantech1@yahoo.com](mailto:erawantech1@yahoo.com)