

# SWING CHECK VALVE

CATALOGUE PAGE 08

Cast Iron Valve

Fig. SCV-601 (Class 125)

Fig. SCV-602 (Class 10K)

Fig. SCV-603 (PN10)



125 S  
200 W.O.G

### PRESSURE - TEMPERATURE RATINGS

SERVICE TEMPERATURE		SIZE 2" to 12"	
°F	°C	Psi	Bar
-20 to 150	-29 to 66	200	13.7
200	93	190	13.1
225	107	180	12.4
250	121	175	12.0
275	135	170	11.7
300	149	165	11.3
325	163	155	10.6
353	178	150	10.3
375	191	145	10.0
406	208	140	9.6
425	218	130	8.9
450	232	125	8.6
<b>HYDROSTATIC TEST</b>	<b>Shell</b>	<b>350</b>	<b>24.1</b>
<b>PRESSURE</b>	<b>Seat</b>	<b>220</b>	<b>15.2</b>

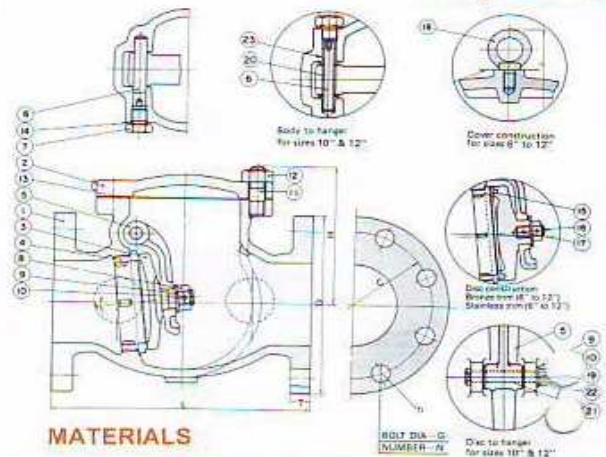
1. Pressure temperature ratings extracted from ANSI B16.1 apply to cast iron flanged end valve designed for primary working pressure in class 125. Test pressure standard ISO 5208.
2. The pressure rating in service shall be restricted to the minimum temperature of -29°C as shown above.
3. Pressure ratings specified above are used for cast iron valves with metal to metal seating surfaces.
4. The temperature shown to a corresponding pressure rating shall be the metal temperature of pressure containing parts. It shall be assumed that the metal temperature of the contained fluid. Application of a pressure rating at a metal temperature other than that of the contained fluid is strictly limited to the responsibility of the user.

### DIMENSIONS

mm.

SIZE (inch)	L	H	D
2"	203	136	152
2.1/2"	216	147	178
3"	241	158	200
4"	292	184	220
5"	330	212	254
6"	356	225	285
8"	495	233	340
10"	622	250	395
12"	698	315	445

Swing type  
Bolted cover  
Flanged ends



### MATERIALS

NO.	NAME of PARTS	SPECIFICATION
1	Body	Cast Iron
2	Cover	Cast Iron
3	Disc	Cast Iron
4	Body seat ring	Cast Bronze
5	Hanger	Cast Bronze
6	Hanger pin	Brass
7	Plug	Brass
8	Disc nut	Stainless steel
9	Washer	Stainless steel
10	Split pin	Stainless steel
11	Cover stud bolt	Steel
12	Cover stud nut	Steel
13	Gasket	Non-asbestos sheet
14	Gasket	Non-asbestos sheet
15	Disc seat ring	Cast bronze
16	Disc stud bolt	Stainless steel
17	Knock pin	Stainless steel
18	Eye bolt	Steel
19	Disc pin	Stainless steel
20, 21	Hanger bush	Stainless steel
22	Disc pin bush	Stainless steel
23	Hanger pin bush	Stainless steel

	NO. HOLE of FLANGE		
	N1 (ANSI150)	N2 (JIS10K)	N3 (PN10)
4	4	4	4
4	4	4	4
4	4	4	8
8	8	8	8
8	8	8	8
8	8	8	8
8	12	12	8
12	12	12	12
12	12	16	12

\* Design and materials are subject to change without notice.



**ERAWAN VALVES CO., LTD.**

8 Soi Udomsuk Sukhumvit 103 Rd. Bangna Bangna Bangkok 10260 Thailand  
Tel. 02-747-5517 [AUTO], Fax: 02-747-5514, 02-399-4427 E-mail : erawantech1@yahoo.com